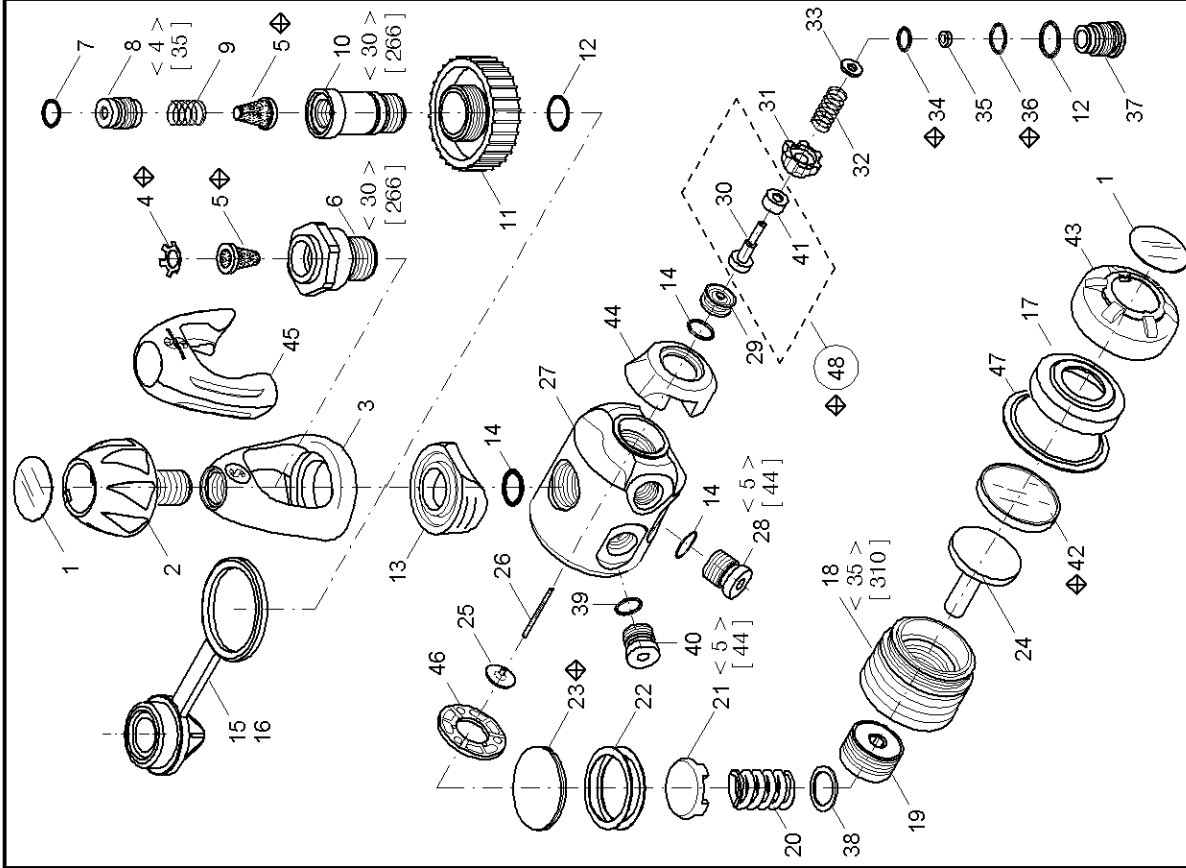


SCUBA PRO

Po.	P/N	DESCRIPTION	DESCRIZIONE	DESCRIPTION	DESCRIZIONE	DESCRIPTION	BEZEICHNUNG
1	01008117	DECAL	DECAL	DECAL	DECAL	DECAL	Decal
2	10917008	YOKE SCREW	VOLANTINO	VOLANTINO	VOLANTINO	VIS ETRIER	Flugelschraube
3	10705957	YOKE 9/16"	STAFFA 9/16"	STAFFA 9/16"	STAFFA 9/16"	ETRIER 9/16"	AnschlußBügel
4	01073101	RETAINER	FILTRER	FILTRER	FILTRER	CLIP RETEN. FILTRE	Sicherung
5	01028109	FILTER	YOKE RETAIN.	YOKE RETAIN.	BLOCCASTAFFA	FILTRER	Filter
6	10103115	YOKE RETAIN.	O-RING	O-RING	O-RING	RETEN. DIETRIER	Bügelhalter
7	01050428	O-RING	FILTRER RET. 200B	FILTRER RET. 200B	FERMA FILTRO 200B	JOINT TORIQUE	O-ring
8	10400122	FILTRER RET. 300B	FILTRER RET. 300B	FILTRER RET. 300B	FERMA FILTRO 300B	RET. FILTRE 200B	Sicherung 200B
**	10400124	SPRING	SPRING	SPRING	MOLLA	RESSORT	Sicherung 300B
9	01020700	SPRING	KNOB RET. 200B	KNOB RET. 200B	FERMO VOL. 200B	RET. VOLANT. 200B	Feder
10	10400125	KNOB RET. 200B	KNOB RET. 300B	KNOB RET. 300B	FERMO VOL. 300B	RET. VOLANT. 300B	Sicherung 200B
**	10400126	KNOB RET. 300B	KNOB, 200B	KNOB, 200B	VOLANTINO 200B	VOLANT. 200B	Sicherung 300B
11	10105120	KNOB, 200B	KNOB, 300B	KNOB, 300B	VOLANTINO 300B	VOLANT. 300B	AnschlußBschrabe 200
**	10105122	KNOB, 300B	O-RING	O-RING	O-RING	JOINT TORIQUE	AnschlußBschrabe 300
12	01050347	O-RING	SADDLE	SADDLE	SELLA	SELLE	O-ring
13	10600111	SADDLE	O-RING	O-RING	O-RING	JOINT TORIQUE	Aufgasesattel
14	01050138	O-RING	INLET PROTECT. INT	INLET PROTECT. INT	TAPPO PROTEZ. INT	PROT. ENTREE HP INT	O-ring
15	10101212	INLET PROTECT. INT	INLET PROTECT. DIN	INLET PROTECT. DIN	TAPPO PROTEZ. DIN	PROT. ENTREE HP DIN	Schutzkugel INT
16	10101211	INLET PROTECT. DIN	DIAPH. RET. AF	DIAPH. RET. AF	FERMO MEMBR. AF	SEDE AF	Schutzkugel DIN
17	10117110	DIAPH. RET. AF	CHAMBER AF	CHAMBER AF	SEDE AF	SEDE AF	
18	10117109	CHAMBER AF	SPRING T.I.S.	SPRING T.I.S.	GHIERA REGOLAZ.	VIS REGL. RESSORT	Einsteilschraube
19	10705114	SPRING T.I.S.	SPRING T.I.S.	SPRING T.I.S.	MOLLA T.I.S.	RESSORT T.I.S.	Feder T.I.S.
20	01020209	SPRING T.I.S.	DIAPHR. DISC	DIAPHR. DISC	DISCO MOLLA	DISQUE RESS.	Membrandruckscheibe
21	10117123	DIAPHR. DISC	DIAPHR. RING	DIAPHR. RING	RONDELLA MEMBR.	RONDELLA MEMBR.	Membranhaltering
22	10705110	DIAPHR. RING	DIAPHRAGM	DIAPHRAGM	MEMBRANA	MEMBRANA	Membrane
23	10117107	DIAPHRAGM	PISTON A.F.	PISTON A.F.	PISTONE	CLAPET	Hochdruckkolben
24	10117155	PISTON A.F.	DISC, MET.	DISC, MET.	DISCO METAL.	SUPPORT	Kolbenteiler
25	10125201	DISC, MET.	DIAPHR. PIN	DIAPHR. PIN	ASTINA	POINTEAU	Kolbennadel
26	10755112	DIAPHR. PIN	BODY	BODY	CORPO	CORPS	Gehäuse
27	10117101	BODY	PLUG H.P.	PLUG H.P.	TAPPO H.P.	BOUCH. SORTIE HP	VerschlußBschrabe HD
28	10101139	PLUG H.P.	ORIFICE	ORIFICE	ORIFIZIO	ORIFICE	Ventilsitz
29	10116161	ORIFICE	H.P. VALVE	H.P. VALVE	VALVOLA H.P.	CLAPET H.P.	Hochdruckkolben
30	10117103	H.P. VALVE	SLEEVE	SLEEVE	GUIDA PISTONCINO	GUIDE	Sitzhalter
31	10116106	SLEEVE	SPRING	SPRING	MOLLA	RESSORT	Feder
32	01020228	SPRING	WASHER	WASHER	RONDELLA	RONDELLA	Scheibe
33	01060107	WASHER	O-RING	O-RING	BOCCOLA O-RING	JOINT TORIQUE	O-ring
34	01060317	O-RING	O-RING	O-RING	O-RING	ANNEAU JOINT TOR.	Ring
35	10755104	O-RING	BAL. CHAMBER	BAL. CHAMBER	CAMERA BILANC.	CHAMBRE COMP.	O-ring
36	01050145	O-RING	WASHER	WASHER	RONDELLA	RONDELLA	O-ring
37	10117102	BAL. CHAMBER	PLUG L.P.	PLUG L.P.	TAPPO B.P.	BOUCHON M.P.	HP Balancekammer
38	01060500	WASHER	SLEEVE	SLEEVE	TAZZINA	GUIDE	Scheibe
39	01050132	O-RING	DIAPHRAGM. AF	DIAPHRAGM. AF	MEMBRANA AF	MEMBRANA AF	VerschlußBschrabe ND
40	10101104	PLUG L.P.	BUMPER AF	BUMPER AF	CAPPUCCIO AF	CAPUCHON AF	Scheibe
41	10117106	SLEEVE	BUMPER	BUMPER	CAPPUCCIO PROTEZ.	PROTECTION ETRIER	Scheibe
42	10117119	DIAPHRAGM. AF	YOKE PROTECTION	YOKE PROTECTION	COPRISTAFFA	PROTECTION ETRIER	Scheibe
43	10117104	BUMPER AF	DISC	DISC	DISCO CENTRAT.	DISQUE	Scheibe
44	10117111	BUMPER	WASHER	WASHER	RONDELLA	RONDELLA	Scheibe
45	10770110	YOKE PROTECTION	HP VALVE COMPL	HP VALVE COMPL	ASS. VALVOLA HP	ENS. CLAP. HP	Hochdruckkolben Komplett
46	01025200	DISC					
47	01060217	WASHER					
48	10117209	HP VALVE COMPL					



< > Torque N.m ± 0
 [] Torque lb.in ± 0
 ◊ Annual replacement
 ** DIN 300 BAR

MK17 AF
CAT. NO. 10-117-X00
 CONFIG. 3 DATE 06/2005 1/1
 REV. C Mod. pos. 34 (was P/N 01050117) - Pos. 18: added torque value - Added pos. 48

CHECKED